

## Bundled Fixture Bracket Kits

### Product Data Sheet

Lighting is a significant component of your company's annual operating expense. In fact, the average lighting system accounts for 24% of the building owner's annual electrical budget. Engineered Products Company (EPCO) addresses the need to reduce energy expenses with our Bundled Fixture Bracket Kits for lighting system upgrades.

Your average cost savings for these Kits is 5-10% compared to purchasing single retrofit products. Expect up to 45% energy savings, significantly reduced electrical energy costs, and a short "return-on-investment" (ROI). These kits can quickly pay for themselves and become the optimal choice for future upgrades to your facility.

Designed for convenience, flexibility, and value, EPCO's Kits eliminate the guesswork by delivering these distinct advantages:

- Single-Source Brand Solution (Excellent Supplier Relationship).
- Deliberate Design (Engineered as a complete upgrade solution).
- Multiple Installation Options.
- Impact resistant construction.
- Bundled Package Pricing.

We offer six Kits in 4 foot or 8 foot lengths that include:

- Dual or Single-End Powered Lampholders for direct-wire T8 LED bi pin lamps.
- Pre-wired Fixture Brackets with supply line conductors and luminaire disconnect.
- 1/4 Turn Retainer Clips.
- 4.25" Wiring Compartment Cover.

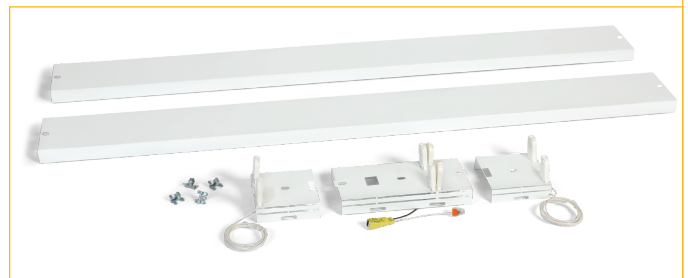
**Note:** A 5.0" Wiring Compartment Cover is available separately.

### BENEFITS

- Simple upgrade to an energy efficient lighting system.
- Upgrading takes 50% less time compared to installing new luminaires.
- Sustainable, ongoing energy savings.
- Uses your existing light fixture housings.
- Payback periods from 15 months to 3 years.
- Suitable for damp locations
- Labor and Time Savings!
- Expedites installation time by 50%.
- Minimal rewiring and recycling on the job site.
- Includes 1-year warranty.

### TYPICAL APPLICATIONS

- Retail Buildings
- Warehouse and Storage Facilities
- Commercial Businesses
- Industrial
- Offices
- Schools and Universities



8 Foot Bundled Fixture Bracket Kit

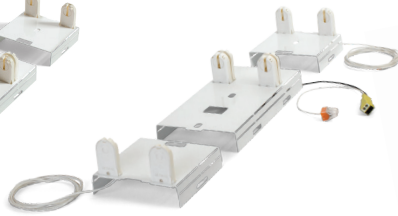


4 Foot Bundled Fixture Bracket Kit

P/N RBK8-4L-S: 8-FT Fixture Bracket for Single-End Powered T8 LED Lamps - Pre-Wired



P/N RBK8-4L-D: 8-FT Fixture Bracket for Dual-End Powered T8 LED Lamps - Pre-Wired



P/N RBK4-2L-S: 4-FT Fixture Bracket for Single-End Powered T8 LED Lamps - Pre-Wired



4.25" Wiring Compartment Cover



5" Wiring Compartment Cover



Retainer Clips

EACH BUNDLE INCLUDES: PRE-WIRED FIXTURE BRACKET, 4.25" WIRING COMPARTMENT COVER, AND RETAINER CLIPS

## PART NUMBERS:

Catalog Number	UPC Number	Description	Order Unit	Unit Qty	Unit Pkg	Units/Case	TL Case Qty	Min Order Qty	MM Req	Ship Wt (Lbs)
<b>Bundled Fixture Bracket Kits for Single-End Powered T8 LED Lamps</b>										
RBK8-4L-S	11408	<b>8 Foot Fixture Bracket Kit, 4 Lamp - Pre-Wired:</b> Includes Fixture Bracket, 4 Foot Supply Line Jumper and Luminaire Disconnect, four Dead-End Lamp Holders, 4.25" Wiring compartment Cover and 1/4 Turn Retainer Clips	EA	1	BX	1	1	1	Yes	7
RBK8-2L-S	11409	<b>8 Foot Fixture Bracket Kit, 2 Lamp- Pre-Wired:</b> Includes Fixture Bracket, 4 Foot Supply Line Jumper and Luminaire Disconnect, two Dead-End lamp Holders, 4.25" Wiring Compartment Cover and 1/4 Turn Retainer Clips	EA	1	BX	1	1	1	Yes	7
RBK4-2L-S	11040	<b>4 Foot Fixture Bracket Kit, 2 Lamp- Pre-Wired:</b> Includes Fixture Bracket, 4 Foot Supply Line Jumper and Luminaire Disconnect, two Dead-End lamp Holders, 4.25" Wiring Compartment Cover and 1/4 Turn Retainer Clips	EA	1	BX	1	1	1	Yes	6
<b>Bundled Fixture Bracket Kits for Dual-End Powered T8 LED Lamps</b>										
RBK8-4L-D	11808	<b>8 Foot Fixture Bracket Kit, 4 Lamp - Pre-Wired:</b> Includes Fixture Bracket, 4 Foot Supply Line Jumper and Luminaire Disconnect, 4.25" Wiring Compartment Cover and 1/4 Turn Retainer Clips	EA	1	BX	1	1	1	Yes	7
RBK8-2L-D	11809	<b>8 Foot Fixture Bracket Kit, 2 Lamp - Pre-Wired:</b> Includes Fixture Bracket, 4 Foot Supply Line Jumper and Luminaire Disconnect, 4.25" Wiring Compartment Cover and 1/4 Turn Retainer Clips	EA	1	BX	1	1	1	Yes	7
RBK4-2L-D	11804	<b>4 Foot Fixture Bracket Kit, 2 Lamp - Pre-Wired:</b> Includes Fixture Bracket, 4 Foot Supply Line Jumper and Luminaire Disconnect, 4.25" Wiring Compartment Cover and 1/4 Turn Retainer Clips	EA	1	BX	1	1	1	Yes	6
<b>Fixture Bracket Kit Accessories</b>										
14079	14079	<b>5" Wiring Compartment Cover:</b> 4 Foot, White, Includes two 1/4 Turn Retainer Clips for 5" Wide Fixture Housing ONLY	EA	1	BX	20	20	20	Yes	19
14080	14080	<b>4.25" Wiring Compartment Cover:</b> 4 Foot, White, Includes two 1/4 Turn Retainer Clips for 4.25" Wide Fixture Housing ONLY	EA	1	BX	12	12	12	Yes	17
14085	14085	<b>1/4 Turn Retainer Clips:</b> for Wiring Compartment Cover	EA	1	BX	42	42	42	Yes	1

- Notes:**
1. T8 LED Lamps are not included.
  2. T8 LED Lamps for EPCO Fixture Bracket Kits must be classified to UL Standard 1598C.

### UNITS OF MEASURE KEY

**Order Unit:** The Unit to be ordered; **Order Qty:** Number of pieces in each Unit; **Unit Pkg:** Packaging types - BG (Bag), BX (Box), BRL (Barrel); **Units/Case:** Unit packages contained in the Case; **TL Case Qty:** The total number of items in each Master Case; **Min Order Qty:** The smallest Unit that can be ordered; **MM Req:** Must order multiples of the Unit in the stated quantities; **Ship Wt (Lbs):** Total weight of the units per Carton

(08/22)  
©2022 Engineered Products Company. All Rights Reserved.

